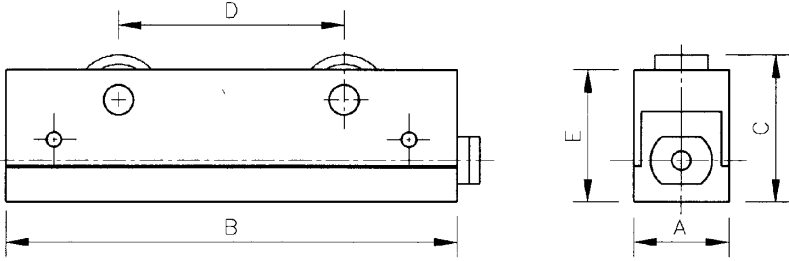
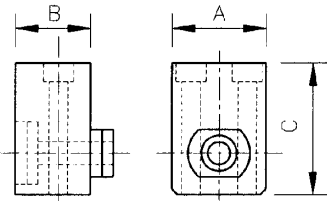


DYROL HYDRAULICALLY OPERATED DIE LIFTERS

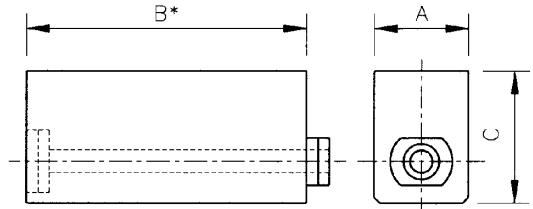


MODEL	A WIDTH	B LENGTH	C HEIGHT	D ROLLER CTRS	E BLOCK HEIGHT	STROKE NOMINAL	LOAD CAPACITY Kg	PRESSURE BAR - MAX
RR18H100	17.6	100	31	40	28	3	200	170
RR25H120	25	120	39	60	35	4	300	170
RR48H150	47	150	53	75	48	6	1000	170

MOUNTING BLOCK



SPACER BLOCK

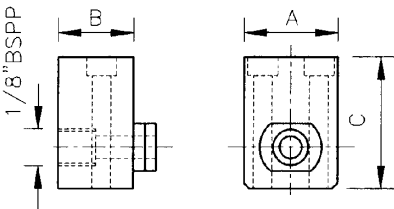


* SPECIAL LENGTHS AVAILABLE ON REQUEST

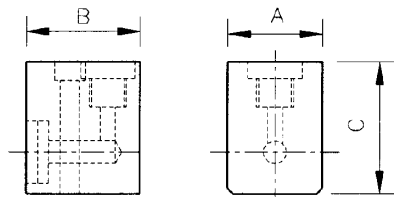
MODEL	A WIDTH	B LENGTH	C HEIGHT
RR18HMTG	17.6	20	28
RR25HMTG	25	20	35
RR48HMTG	47	20	48

MODEL	A WIDTH	B LENGTH	C HEIGHT
RR18HBSB	17.6	100	28
RR25HBSB	25	120	35
RR48HBSB	47	150	48

INLET BLOCK



END BLEED BLOCK



MODEL	A WIDTH	B LENGTH	C HEIGHT
RR18HILB	17.6	20	28
RR25HILB	25	20	35
RR48HILB	47	20	48

MODEL	A WIDTH	B LENGTH	C HEIGHT
RR18HEBB	17.6	30	28
RR25HEBB	25	30	35
RR48HEBB	47	20	48