

ENERPAC 

Turbo II Air Hydraulic Pumps



ENERPAC[®]
INDUSTRIAL TOOLS



The New Generation in Air Hydraulic Pump Technology

Half a century of experience in high pressure air hydraulic pump technology has resulted in a quieter pump that offers long lasting, trouble-free performance and durability.

Turbo II Air Hydraulic Pumps

▼ Shown from top to bottom: PAMG-1402N, PARG-102N, PATG-1102N, PATG-1105N



- External adjustable pressure relief valve (behind sight glass)
- Lower air consumption and operating costs
- Return-to-tank port for use in remote valve applications
- Internal pressure relief valve provides overload protection
- Quieter operation – reduced noise level to 76 dBA reduces operator fatigue
- Operating air pressure: 1,7-8,6 bar, enables pump to start at extremely low pressure
- High efficiency cast aluminium air motor
- Reinforced heavy-duty lightweight reservoir for applications in tough environments
- Air pendant for remote control operation
- Composite air piston seal allows operation on completely dry air supply

▼ Easily operated by hand or by foot.



Setting New Standards... ...in efficiency and reliability



RFL-102 Regulator-Filter-Lubricator

Recommended for use with all Turbo air pumps. Provides clean, lubricated air and allows for air pressure adjustment. Steel bowl guards are standard.



Large Reservoir Models

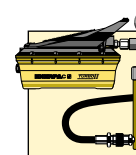
The Turbo II Air Pump is also available with an enlarged reservoir: **PATG-1105N, PAMG-1405N** and

PARG-1105N.



Hoses

Enerpac offers a complete line of high quality hydraulic hoses. To ensure the integrity of your system, specify only genuine Enerpac hydraulic hoses.



Pump and Cylinder Sets

Turbo II pumps are also available as sets (Turbo pump, cylinder, gauge, couplers and hose) for your ordering convenience. See the full line Industrial Tools catalogue for details.

Used with Cylinder	Usable Oil Capacity (cm ³)	Model Number
Single-Acting	2081	PATG-1102N*
	4227	PATG-1105N
Single-Acting	2081	PARG-1102N
	4227	PARG-1105N
Double-Acting	2081	PAMG-1402N
	4227	PAMG-1405N

* Available as set. See note at this page.

Turbo II Air Hydraulic Pumps

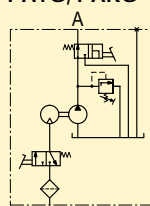


PATG-models use a foot or hand operated treadle to control air and valve functions.

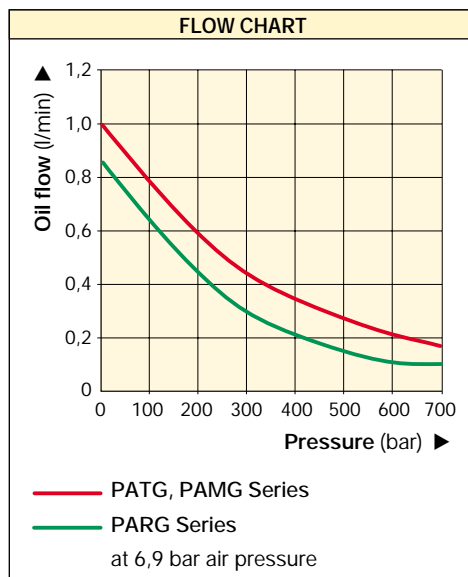
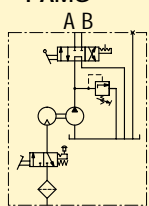
PAMG-models use a treadle with a locking feature to control air, and a 4-way manual valve to control hydraulics.

PARG-models use air pendant for remote control.

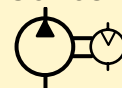
PATG, PARG



PAMG



**PATG
PAMG
PARG
Series**



Reservoir Capacity:

2,5 and 5,0 litres

Flow at Rated Pressure:

0,08 - 0,16 l/min

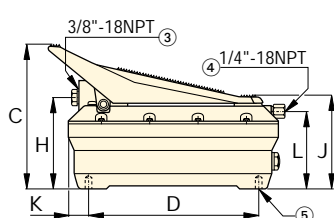
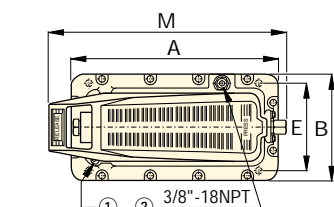
Air Consumption:

225 - 340 l/min

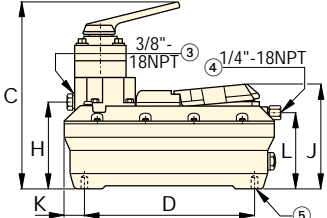
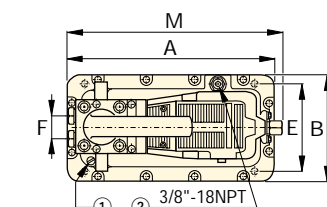
Maximum Operating Pressure:

700 bar

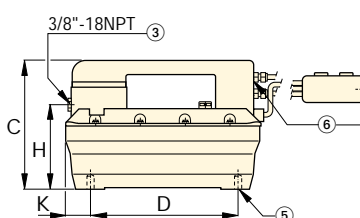
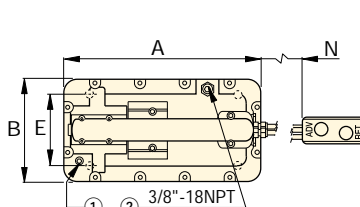
Maximum pressure (bar)	Output Flow Rate (l/min) air supply to pump		air supply to pendant		Pump Series	Valve function	Air Pressure Range (bar)	Air Consumption air supply to (l/min) @ 5,2 bar air		Sound Level (dBA)
	No Load	Load	No Load	Load				Pump	Pendant	
700	1,00	0,16	-	-	PATG	Advance / Hold / Retract	1,7 - 8,6	340	-	76
700	0,76	0,08	0,84	0,10	PARG	Advance / Hold / Retract	2,8 - 10,3	225	285	76
700	1,00	0,16	-	-	PAMG	Advance / Hold / Retract	1,7 - 8,6	340	-	76



PATG-1102N
PATG-1105N



PAMG-1102N
PAMG-1105N

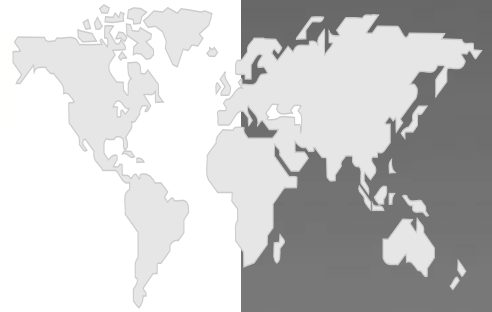


PARG-1102N
PARG-1105N

- ① Filtered 'Permanent' Tank Vent
- ② Return-to-Tank/Auxiliary Vent/Fill Tank Port
- ③ Hydraulic Output
- ④ Swivel Air Input with Filter
- ⑤ 4 Mounting Holes for #10 thread forming screw. Maximum depth into reservoir = 19 mm
- ⑥ Air Input on PARG models is 1/4"-18 NPT.

Valve Operation	Turbo II Dimensions (mm)													kg	Model Number
	A	B	C	D	E	F	H	J	K	L	M	N			
Treadle 3/3	313	165	211	230	102	-	129	146	42	113	347	-	8,2	PATG-1102N*	
	396	201	209	230	102	-	131	146	86	112	437	-	9,9	PATG-1105N	
Air Pendant 3/3	313	165	200	230	102	-	129	-	42	-	-	4500	10,0	PARG-1102N	
	396	201	209	230	102	-	131	-	86	-	-	4500	11,7	PARG-1105N	
Manual 4/3	313	165	267	230	102	36	130	152	42	113	315	-	11,0	PAMG-1402N	
	396	201	267	230	102	36	132	152	86	112	405	-	12,7	PAMG-1405N	

Turbo II Air Hydraulic Pumps



ENERPAC

The Industrial Tools line

Cylinders

- General purpose
- Pancake
- Low height
- Heavy duty
- Hollow plunger
- Industrial
- Pull
- Lock nut
- Stage and Strand Lift
- Synchronous Lift
- Jacks
- Spread

Pumps

- Manual
- Electric driven
- Compressed air driven
- Petrol driven
- Battery powered
- Torque Wrench pumps

Tools

- Maintenance sets
- Manual Pullers
- Multi purpose puller sets
- Posi Lock pullers
- Torque wrenches
- Nut cutters
- Pipe benders
- Cutters
- Presses
- Flange spreaders
- Alignment Tools

Valves and accessories

- Hoses and couplers
- Gauges
- Tension meters
- Valves
- Fittings
- Manifolds
- Load cells

Enerpac Worldwide Locations

Australia

Tel: +61 297 438 988
Fax: +61 297 438 648

Canada

Tel: +1 905 564 5749
Fax: +1 905 564 0305

Toll Free:

Tel: +1 800 268 4987
Fax: +1 800 461 2456

China

Tel: +86 21 5866 9099
Fax: +86 21 5866 7156

France, Turkey, Greece, Africa, Middle East

Tel: +33 1 601 368 68
Fax: +33 1 692 037 50

Germany, Switzerland, Austria, Eastern Europe

Tel: +49 211 471 490
Fax: +49 211 471 49 28

Hong Kong

Tel: +852-2561 6295
Fax: +852-2561 6772

India

Tel: +91 22 769 47 78
Fax: +91 22 769 84 73

Italy

Tel: +39 2 486 111 00
Fax: +39 2 486 012 88

Japan

Tel: +81-048-430-2311
Fax: +81-048-430-1117

Mexico

Tel: +52 771 337 00
Fax: +52 771 838 00

The Netherlands, Belgium, Luxembourg, Sweden, Denmark, Norway, Finland, United Kingdom, Ireland

Tel: +31 318 535 911
Fax: +31 318 525 613
+31 318 535 848

UK, Ireland

Tel: +44 01527 598 900
Fax: +44 01527 585 500

Singapore

Tel: +65 484 5108
Fax: +65 484 5669

South Korea

Tel: +82 32 675 08 36
Fax: +82 32 675 30 02/73

Spain, Portugal

Tel: +34 91 661 11 25
Fax: +34 91 661 47 89

USA, Latin America and Caribbean

Tel: +1 262 781 6600
Fax: +1 262 781 1049

User inquiries:

Tel: +1 800 433 2766
Distributor inquiries/orders:
Tel: +1 800 558 0530

Ref:April-24-2001E



The Full Enerpac Workholding Line

Ask for your free copy of the Enerpac Workholding catalog for information about solutions to your workholding needs. The catalog contains our full line of cylinders, clamps, pumps, valves and accessories, plus a CD-ROM filled with our 2D and 3D CAD files.



The Enerpac Industrial Tools Catalog

A complete range of quality high force tools for all industrial applications, with local availability and after-sales service anywhere in the world. This is what has made Enerpac the recognized global market leader in it's field.



e-mail: info@enerpac.com
Internet: www.enerpac.com

Your Enerpac Distributor: